

Current Support Opportunities

Indoor Animal Rehabilitation Space:

Each indoor animal rehabilitation sponsorship will come with a name placard on the door of the room, recognition with links on our website, and inclusion in all grand opening celebration materials.



X-Ray Room:

Nature's Nursery has never had on-site Xray capabilities. Until now, animals were taken to a vet clinic, once per week at a maximum of three at a time. The new building will have an Xray room and equipment allowing us timely and unlimited diagnostics without causing the animals additional stress with transport.

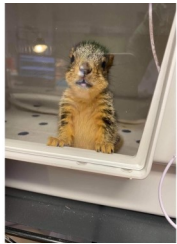
\$20,000



Surgical Suite:

The surgical suite will provide a sterile and safe environment for animals undergoing surgical procedures and invasive treatments. Unlike our current space, the new surgical suite will have proper lighting, surgery tables, and clinical materials for walls and floors for proper disinfecting. The suite will provide proper spacing for safer work conditions, storage for surgical tools, proper washing stations and better accommodations for the animal.

COMMITTED MCLAREN ST. LUKE'S



NICU/Nursery:

The tiniest of our animals take up the most space during the busy season from April-October. With over 1,700 baby animals being admitted each year, our NICU is a critical space for proper care and treatment. The NICU will contain numerous incubators, shelving for small caging habitats, storage for nests, pouches, blankets, bottles, formula and food. Scales for monitoring weight and seating for staff and volunteers to bottle feed and tube feed the animals.

\$15,000



Wet Room/Waterfowl Rehab

We are very excited to upgrade from our current residential style, single bath tub, to a properly designed space for care of aquatic animals. The room will have two, 125 gallon raised stock tubs for waterfowl and large turtles to swim.

\$10,000 COMMITTED IN MEMORY OF NANCY RUSSELL-SHAW



Kennel/Large Animal Rehab

The days of large animals such as fox, eagles, hawks and herons having to rehabilitate in a closet or bathroom are nearly behind us. The kennel space will include three individual, fully walled, rooms for housing large animals in need of care.

\$10,000 COMMITTED IN MEMORY OF NANCY RUSSELL-SHAW